

# Schlumpf Ergonomic Handling Systems



LIFT · TURN · TRANSPORT · LOAD · UNLOAD  
· STACK · STORE · PACKAGE · PALLETIZE

- Low Cost. Made In U.S.A.
- Simple Function
- Safe, Easy and Economical

Schlumpf's **MRT-500-AL-ADJ** is engineered to quickly and safely lift and turn rolls with weights to 500 lbs (226 kg).

The **MRT-500-AL-ADJ's** amazing turning function enables operators to turn even heavy loads with minimal effort with no external power source. The auto-leveling feature automatically shifts the hoist hook to ensure exact horizontal and vertical positioning both in the loaded and unload states, and the adjustable turner arm allows the unit be used with a greater variety of roll widths.

Rolls can be turned as quickly as the operator can move making for safe, rapid handling of your valuable product. By removing the need to "Manhandle" heavy loads the **MRT-500-AL-ADJ** reduces the risk of operator injury and fatigue, thus making your work place safer...saving you money.



"Back Injuries - Nations Number One Workplace Safety Problem." The U.S. Department of Labor reports that more than one million workers suffer back injuries in the U.S. each year, costing industry billions of dollars on top of the pain and suffering borne by employees. Schlumpf Ergonomic Handling Systems will minimize or eliminate the risk of operator injury and maximize productivity and profits.

#### Standard Features:

User friendly design.  
Fast and easy to use for all operators and skill levels.  
Ergonomic design with comfortable handles.  
Quick-change expanding mandrel holder.  
Change mandrel sizes in seconds without tools.  
Rugged steel construction with powder coated finish.  
Simple, low maintenance design.  
Low ongoing operating costs.  
Made in U.S.A.

#### Options & Accessories:

Expanding mandrels 3" (76 mm) to 12" (304.8 mm).  
Anti-telescoping attachment with manual clamp.  
Anti-telescoping attachment with pneumatic clamp.  
Extended turner for greater roll widths.  
Integrated hoist controls.  
Mounting brackets for hoist pendants & controls.  
Custom configurations available.

Distributed By:

Specifications and dimensions subject to changes without notice.  
Consult Schlumpf for current drawings! Published 04-2005.

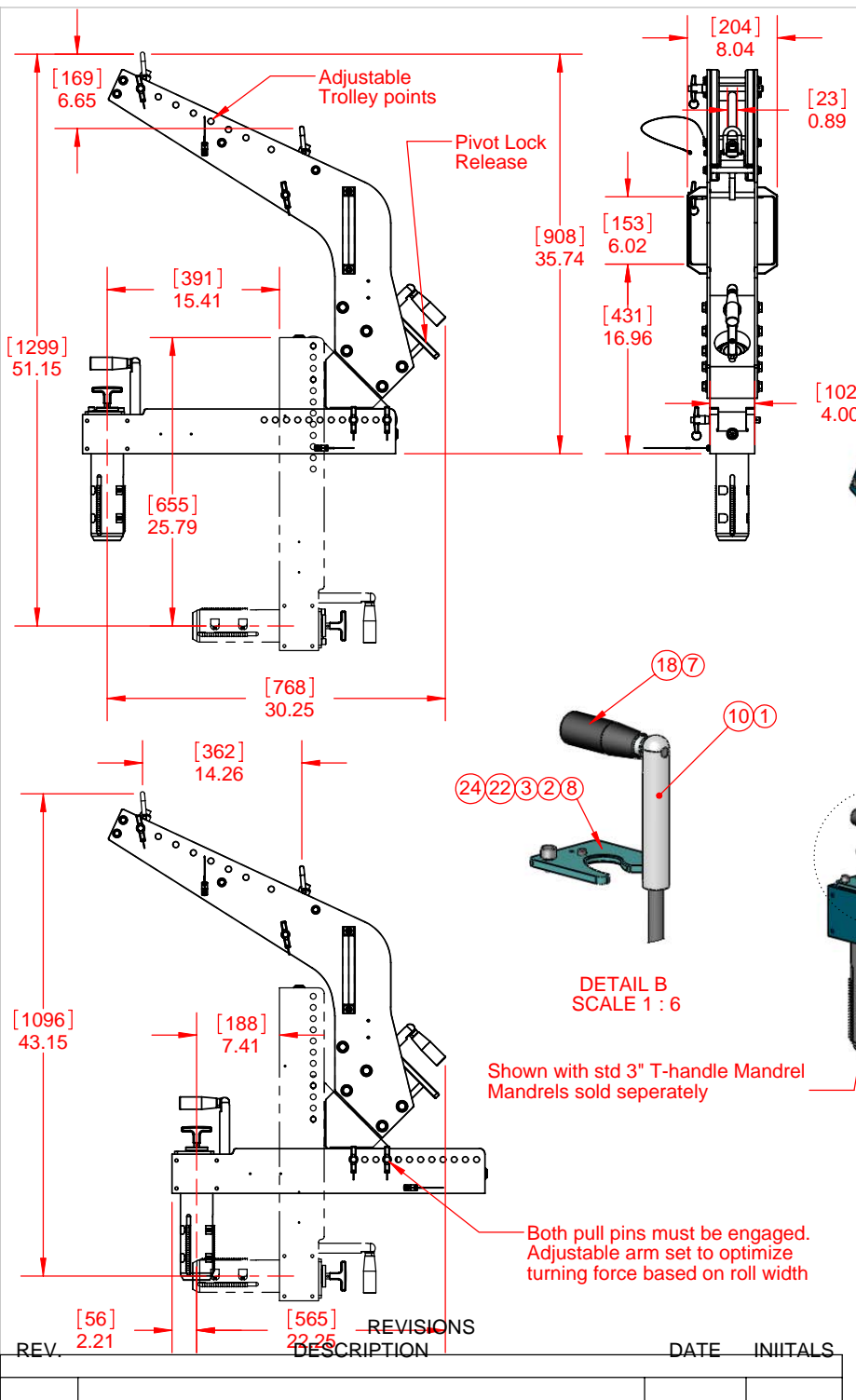


innovation. performance. quality.



\*Upon Request

MRT-500-AL-ADJ Manual Roll Turner  
With Auto Leveling and Adjustable Turner Arm



ITEM NO.	PART NUMBER	DESCRIPTION	QTY.
1	K040009	M12 x 1.75 x 100 Hex SHCS	2
2	K040126	M8 x 1.25 x 16 Hex SHCS	1
3	K040278	M4 x 0.7 x 6 Hex SHCS	1
4	K040460	M6 x 1.0 x 25 Socket FCHS	1
5	K040522	M5 x 0.8 x 10 HHCS	1
6	K040567	M12 x 1.75 x 30 HHCS	10
7	K040825	M10 Lock Washer	2
8	L-10413-06R2	Mandrel Locking Plate	1
9	L-10461-04	MRT-500 Pivot Pin	1
10	L-10627-07	MRT turning handle	2
11	L-10780-01R1	MRT-500-ADJ Mandrel Arm	1
12	L-10780-02	MRT-500 Pivot Block	1
13	L-10780-03	MRT-500 Crane Block	1
14	L-10780-04	MRT-500 Locking Pin	1
15	L-10780-05	MRT-500 Locking Bar	1
16	L-10780-06	MRT-500-ADJ auto level kit	1
17	P-10053	M12 Lock Washer	10
18	P-10087	Revolving Handle	2
19	P-10122	.687" OD x 2.5" long comp. spring	1
20	P-10293	M5 Lock Washer	1
21	P-10389	Wire Lanyard with Tab	1
22	P-10829	retracting thumb screw	1
23	P-11086	.5" x 4" Quick Release Pin	2
24	P-40362*	8mm ID plain bushing	1
25	P-40386	40mm Taper Roller Bearing	2
26	P-40387	Tab Washer 40mm	1
27	P-40388	Slotted Nut 40mm	1
28	P-40462	Bearing Ring 40mm	1
29	P-10121	M8 Finish Washer	1
30	K040106	M8 x 1.25 x 20 Socket FCHS	1

**MRT-500-AL-ADJ**  
 Max Capacity: 500 lbs (227 Kg)  
 Max Operator Force: 25 lbs (111 N)

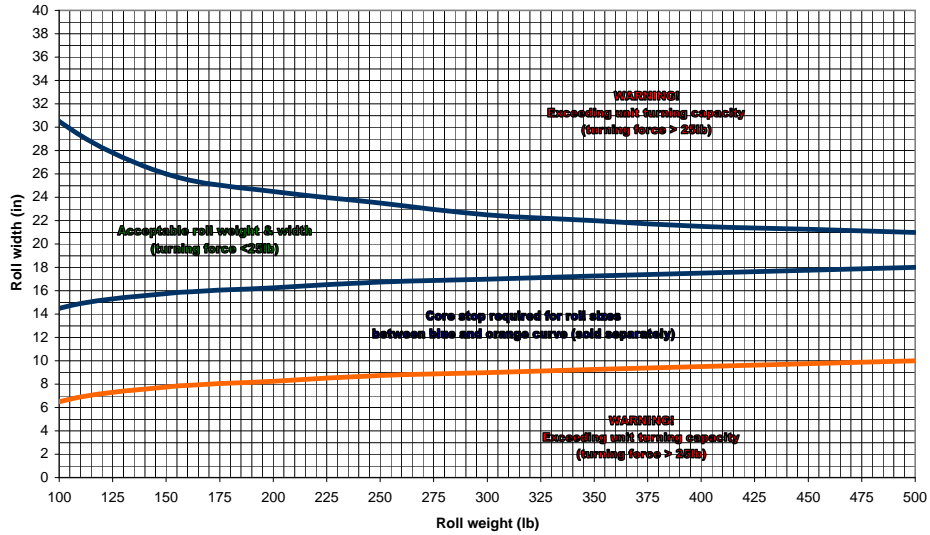
parts marked with (\*) indicate recommended spare parts to be kept on hand, per unit

THE INFORMATION CONTAINED IN THIS DRAWING IS THE SOLE PROPERTY OF SCHLUMPF INC. ANY REPRODUCTION IN PART OR AS A WHOLE WITHOUT WRITTEN PERMISSION OF SCHLUMPF INC. IS PROHIBITED.		PART. NO. <b>L-10780</b>
SIZE <b>A</b>	DO NOT SCALE DRAWING	UNIT WEIGHT (lb) 102.677
DRAWN BY <b>Rich West</b>		DESIGNED BY <b>Rich West</b>
MODEL <b>MRT-500-AL-ADJ (manual roll turner)</b>		DATE CREATED 8/3/2009
		DATE PRINTED 9/17/2009

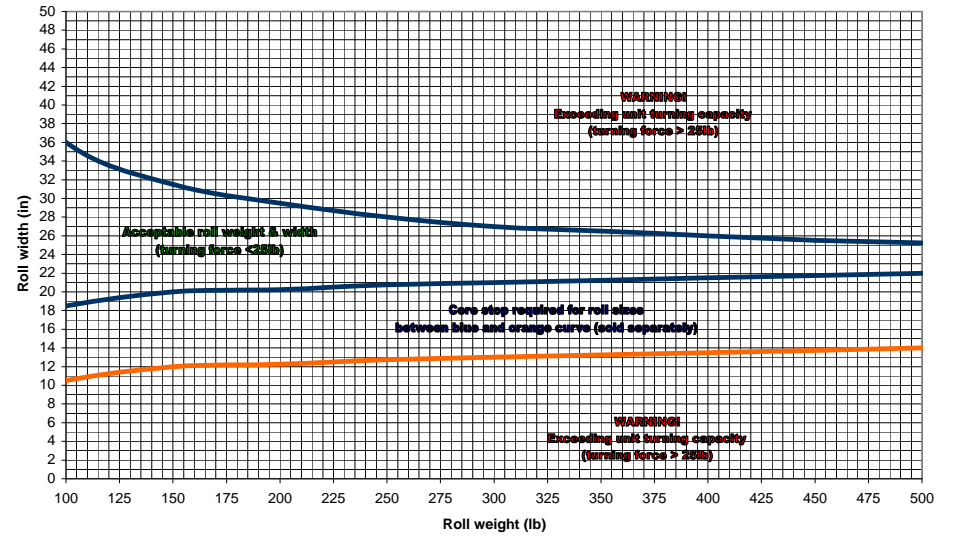
**schlumpf**

15 Enterprise Drive; Windham, ME 04062 U.S.A.  
 Tel: 207-893-1903 Fax: 207-893-1905  
 E-Mail: mail@schlumpf-inc.com URL: www.schlumpf-inc.com

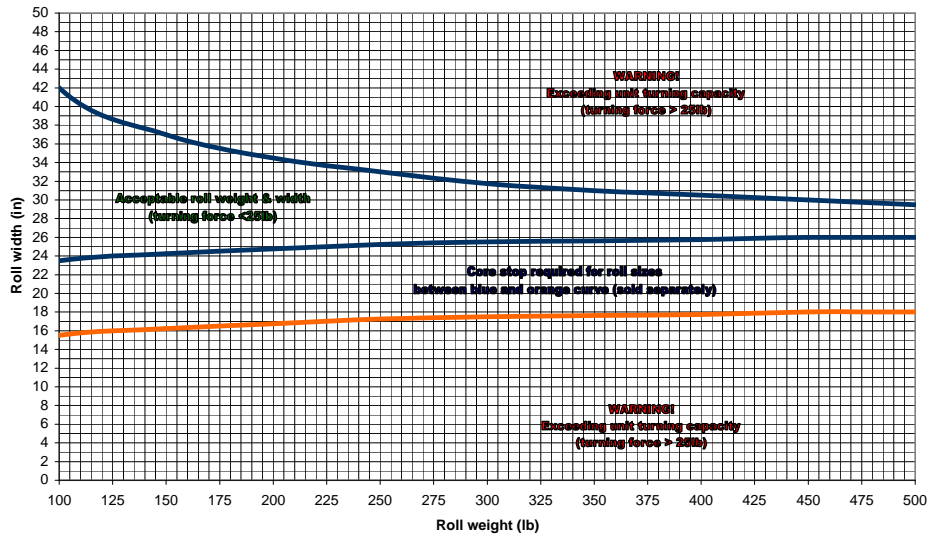
MRT-500 capacity range - 16" mandrel arm



MRT-500 capacity range - 18" mandrel arm



MRT-500 capacity range - 20" mandrel arm



MRT-500 capacity range - 22" mandrel arm

